



STEELE BARNETT, IDAHO, AND BRUCE HUGHES,
OHIO AFTER BARNETT WAS WOUNDED DURING
LAST WEEK OF THE WAR, NEAR ZIRL, AUSTRIA
BOTH MEMBERS OF I+R PLATOON, HQ CO., 409th
INF. REGT.

MAY 1945



INNSBRUCK, AUSTRIA
MAY 1945



FRONT
ROW LT. HAYNES SGT. ALBERT PIKE SGT. MESSER SGT. JACK MANN

MEMBERS OF 1st PLATOON, HQ CO., 409th INF. REGT

MISSING: BRUCE HUGHES, BILL BACHE, ROBT. ELSNER, MOUTON B. MARTIN
(WOUNDED) (WOUNDED) (WOUNDED)

MAY 1945 - OUTSIDE INNSBRUCK, AUSTRIA



FRONT
ROW LT. HAYNES

SGT. ALBERT PIKE

SGT. MESSER

SGT. JACK MANN

MEMBERS OF 1st PLATOON, HQ CO., 409th INF. REGT

MISSING: BRUCE HUGHES, BILLBACHE, ROBT. ELSNER, MOUTON B. MARTIN
(WOUNDED) (WOUNDED) (WOUNDED)

MAY 1945 - OUTSIDE INNSBRUCK, AUSTRIA

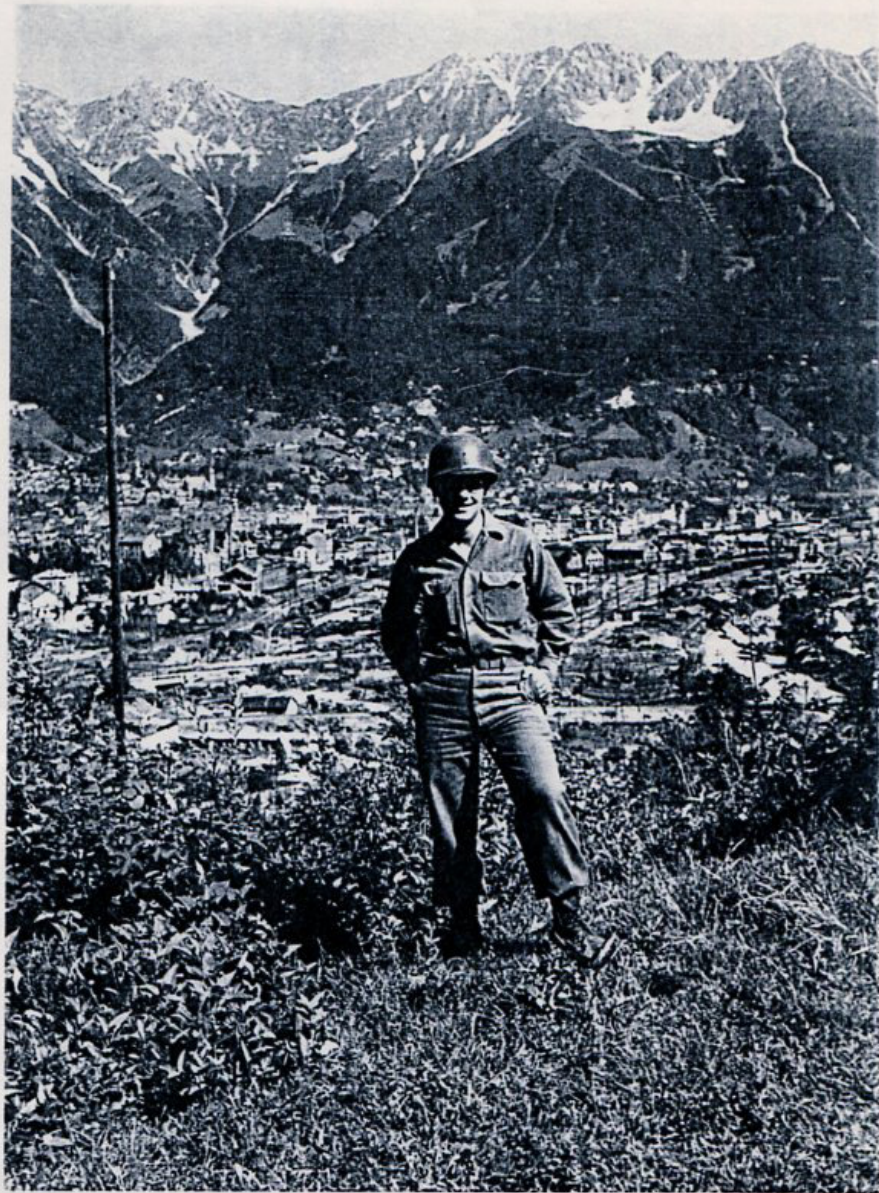


BRUCE HUGHES AND GLEN CREGO, MICHIGAN,
IN INNSBRUCK, AUSTRIA.
MAY 1945.

BOTH WERE MEMBERS OF I&R PLATOON, HQ CO,
409th INF. REGT.



STEELE BARNETT, IDAHO, MEMBER OF I&R PLATOON,
HQ CO, 209th INF. REGT. - MAY 1945.



PFC. GEO. JONES, MURRAY, KY.
MEMBER OF I & R PLATOON, HQ CO.,
409th INF. REGT
ABOVE INNSBRUCK, AUSTRIA, MAY 1945



PFC. BRUCE HUGHES, ABOVE INNSBRUCK
MAY 1945

MEMBER OF I&R PLATOON, HQ CO., 409 INF. REGT.



AUSTRIAN MILITARY POLICEMAN (ARMED)
DIRECTING TRAFFIC IN INNSBRUCK AFTER
INNSBRUCK HAD BEEN DECLARED AN OPEN CITY
(EARLY MAY 1945).

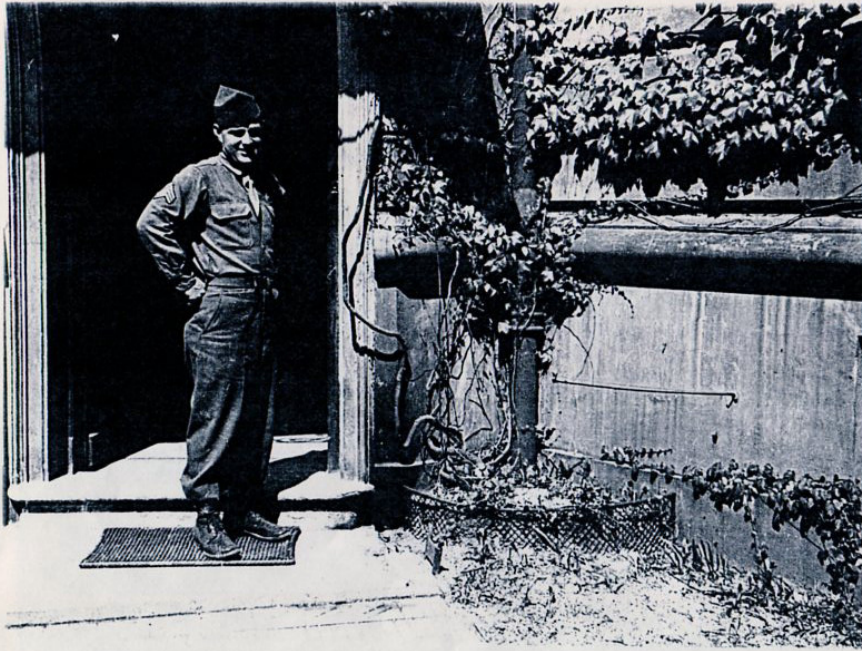
OVER-

STREETCAR IN
INNSBRUCK, AUSTRIA
MAY 1945





CABLE CAR IN INNSBRUCK AUSTRIA - MAY 1945
NOTE 103D LOGO ON CAR

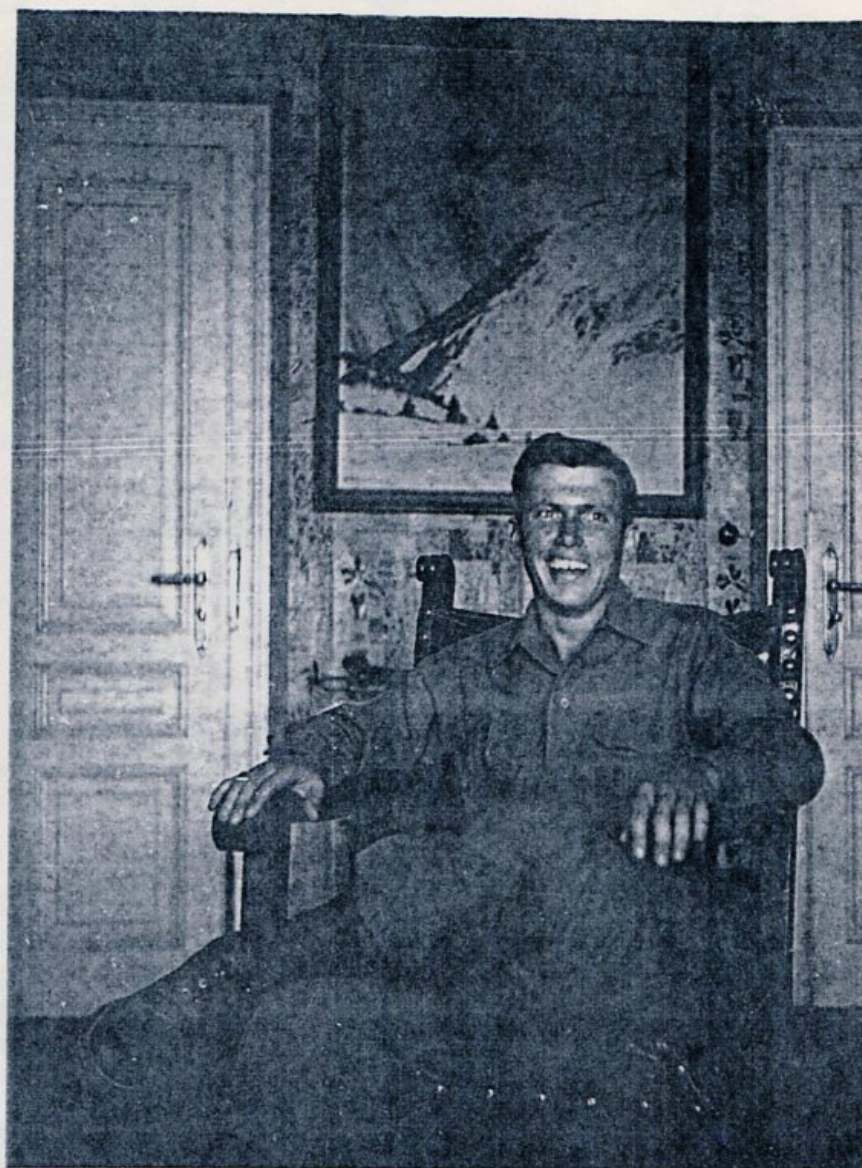


SGT. JACK MANN, CHICAGO, IL
I & R PLATOON, HQ CO., 409th INF. REGT

IN CIVILIAN LIFE, JACK WAS EMPLOYED
IN THE CHICAGO STOCK YARDS.



BRUCE HUGHES AFTER TRANSFER FROM 103RD INF.
TO 83RD CHEMICAL MORTAR BATTALION - CIRCA JULY 1945.
- OUTSIDE INNSBRUCK.



BRUCE HUGHES, I&R PLATOON, HQ CO., 409th INK. REGT
MAY 1945.
INNSBRUCK, AUSTRIA

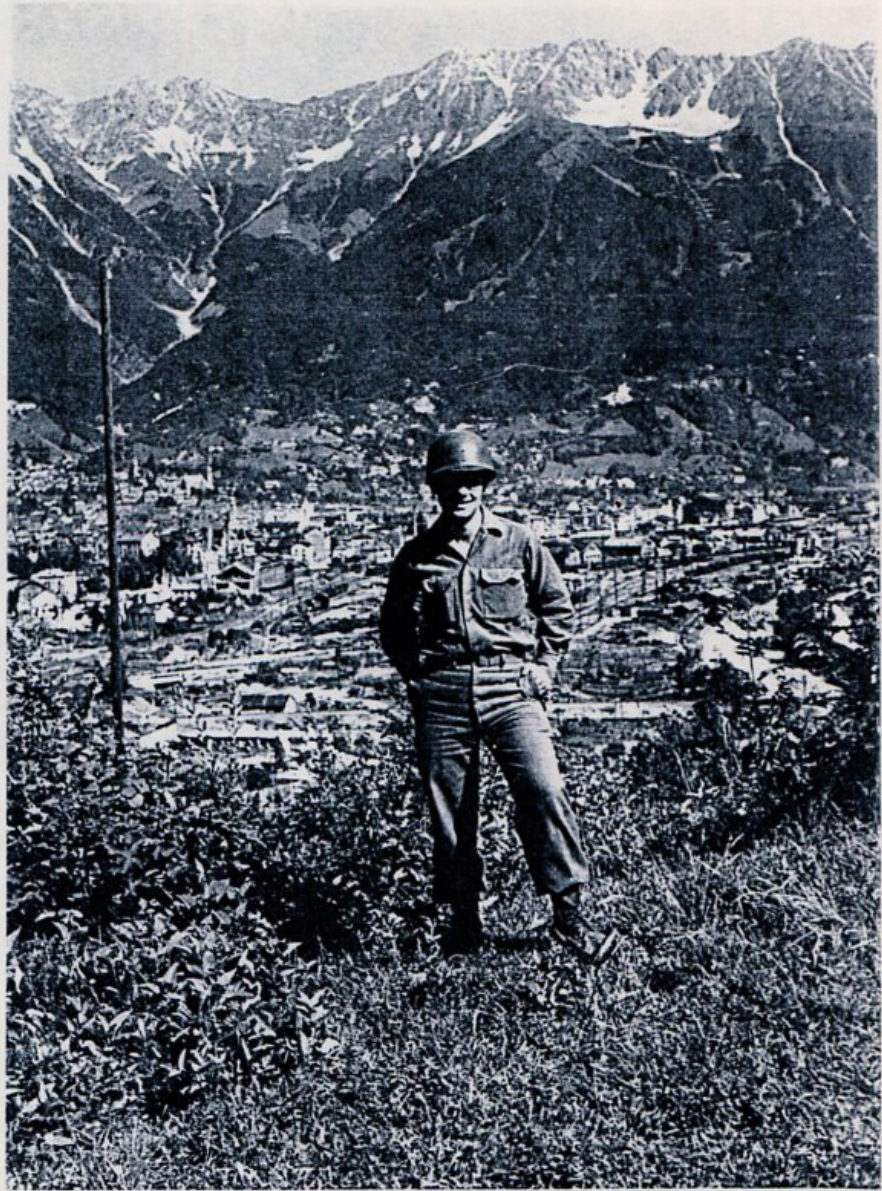


CAPT. TERRANOVA AND
ANOTHER HQ CO. OFFICER
EN ROUTE TO BRENNER PASS,
MAY 1945

CAPT. TERRANOVA WAS CO. OF HQ CO.,
409th INF. REGT.



PPC BRUCE HUGHES, EN ROUTE TO BOLZANO, ITALY, THROUGH
BRENNER PASS. MAY 1945
MEMBER OF I+R PLATOON, HQ CO., 409th INF REGT.



GEORGE JONES, MURRAY, KY. - EARLY
MAY 1945. (INNSBRUCK, AUSTRIA)
MEMBER OF I & R PLATOON, H S CO,
409th INF. REGT.

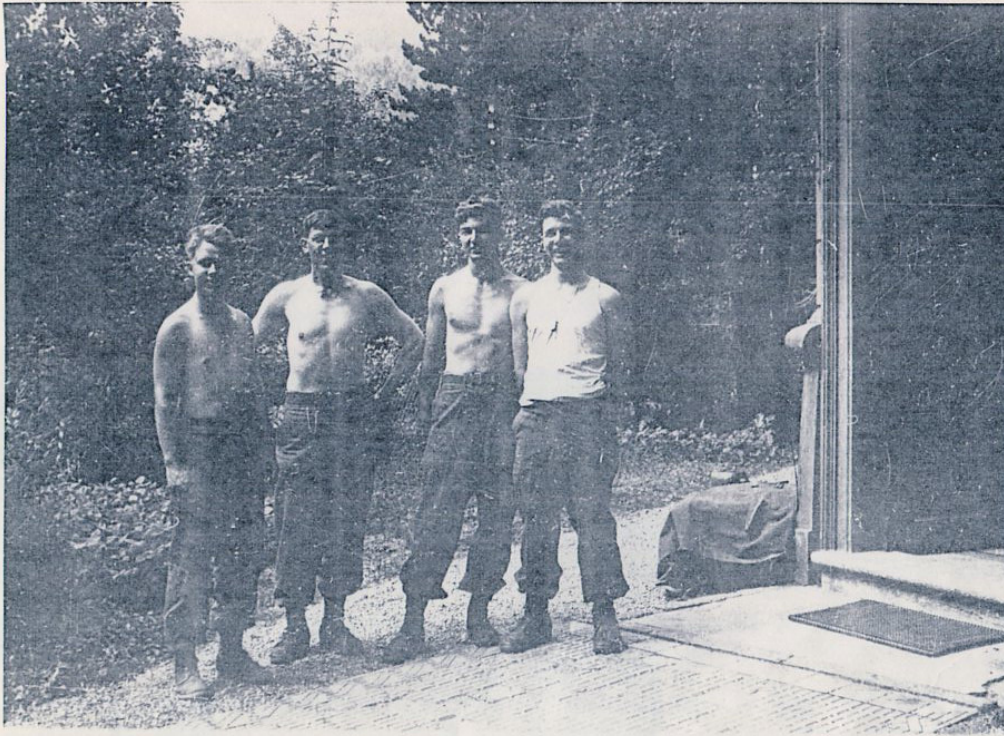


DAMAGED PLANES (LUFTWAFFE) AT AIRFIELD
OUTSIDE INNSBRUCK, AUSTRIA

MAY 1945

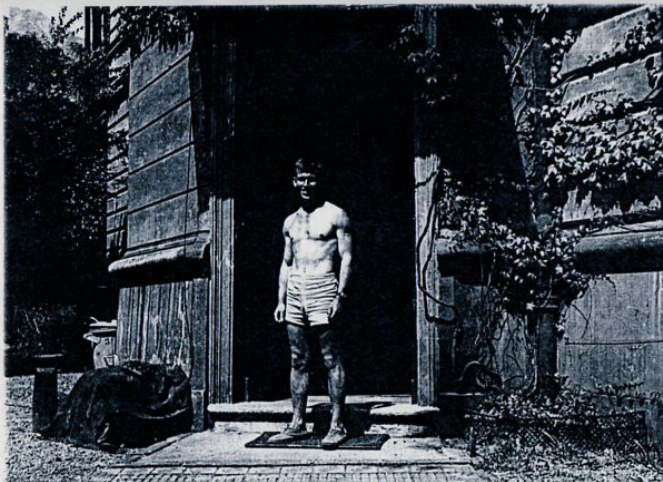


PFC. GEORGE JONES, MURRAY, KY, ABOVE INNSBRUCK, AUSTRIA
- MAY 1945. MEMBER OF I+R PLATOON, HQ CO., 400th INF.
REGT.



GED. JONES - STEELE BARNETT - GLEN CREAG - "HAPPY" HATHAWAY

MEMBERS OF I & R PLATOON, HQ CO, 409th INF REGT - KOCH STRASSE, INSBRUCK, AUSTRIA - MAY 1945 -



PR. BRUCE HUGHES, AT KOCH STRASSE
BILLET, MAY 1945, MEMBER OF
I & R PLATOON, HQ CO., 409TH INF. REGT.
INNSBRUCK, AUSTRIA



OUR BILLET IN INNSBRUCK ON KOCH STRASSE
EARLY MAY 1945. (ROBT. BRUCE HUGHES)

-OVER

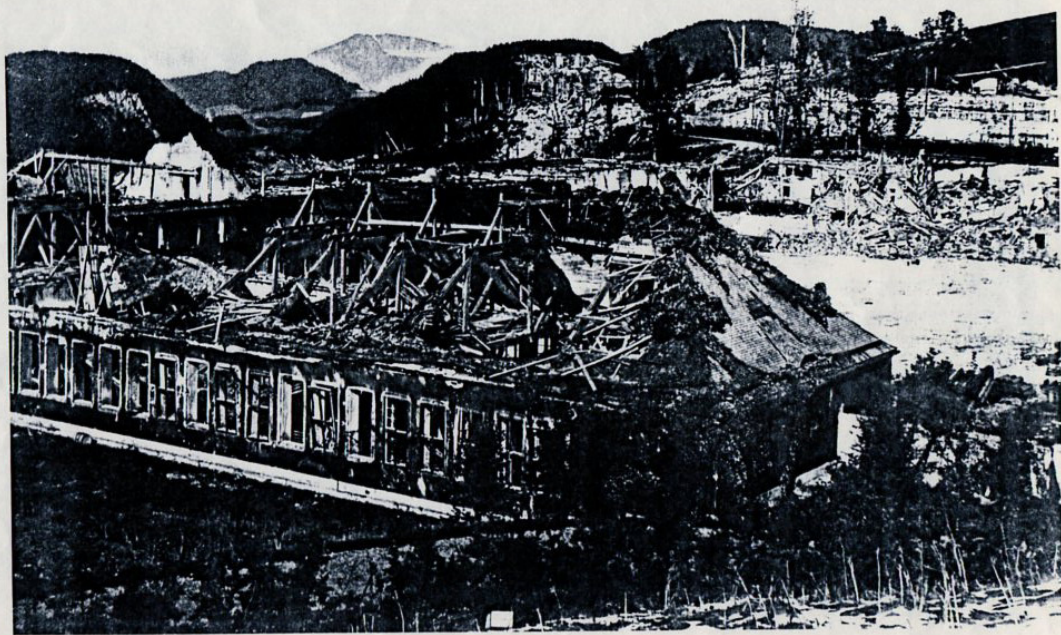


STEELE BARWETT, IDAHO, AT BILLET OF I-9R PLATOON, HQ (C) 409 INF REGT,
IN MAR 1945, PLATOON MEMBER

GLEN CREGO, MICHIGAN,
MEMBER OF
I+R PLATOON, HQ
CO, 409th INF REGT.
INNSBRUCK, AUSTRIA,
MAY 1945.

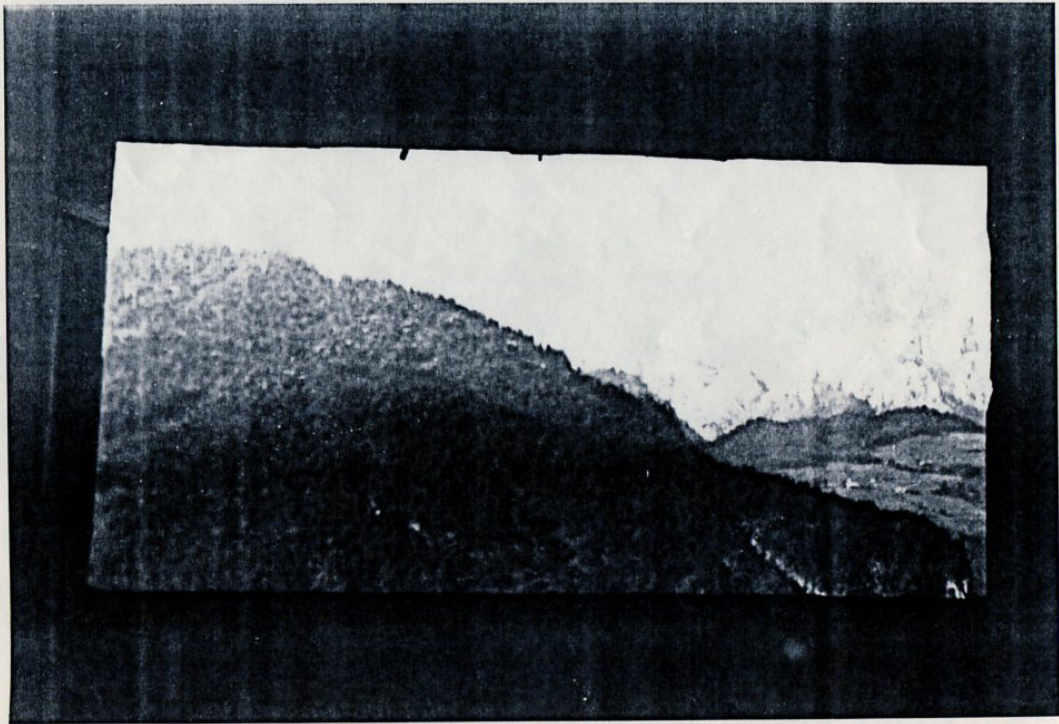
NOTE "BLACKOUT" CURTAINS."





BOMBED OUT SS BARRACKS
AT THE EAGLE'S NEST, ABOVE
BEJCHTESGADEN
MAY 1945

A. HITLER'S EAGLE'S NEST PICTURE
WINDOW BEFORE IT WAS DESTROYED TO
PREVENT ITS BECOMING A NAZI SHRINE
ABOVE BERCHTESGADEN - MAY/JUNE 1945



CROWD ABOVE RAIL-
ROAD STATION IN
NANCY, FRANCE
MAY/JUNE 1945

—000—
SEE SEPARATE PIC
OF VIEW BELOW —





NANCY, FRANCE
VIEW OF CHAOTIC MOVEMENT OF
RAILROAD PASSENGERS RIGHT AT
END OF THE WAR



PFC BRUCE HUGHES ON MARINE SHARK
EN ROUTE TO NEW YORK - MARCH 1946.